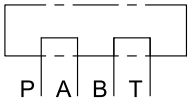


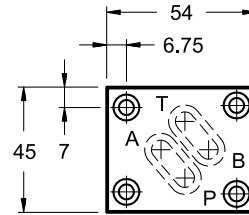
2 - CONNECTION PLATES



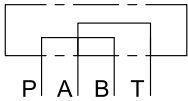
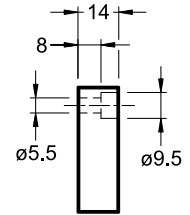
name: PE3A-TA/10N (NBR seals) **code: 1950371**

name: PE3A-TA/10V (FPM seals) **code: 1950375**

ISO interface: ISO 4401-03
 nominal flow rate (Δp 5 bar): 50 l/min
 flow path configuration: P → A, B → T
 material: aluminium
 surface treatment: -
 plate weight: 0,1 kg
 fixing screws: 4 SHC M5x16 A8.8 zinc-plated
 seals: 2 OR type 2068 (17.17x1.78) (90 Shore for NBR)



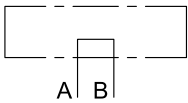
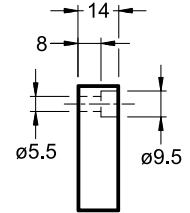
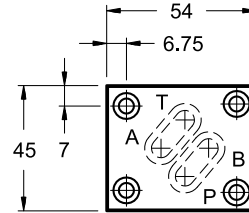
dimensions in mm



name: PE3A-TB/10N (NBR seals) **code: 1950361**

name: PE3A-TB/10V (FPM seals) **code: 1950365**

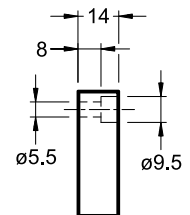
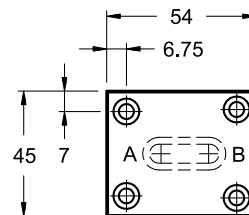
ISO interface: ISO 4401-03
 nominal flow rate (Δp 5 bar): 50 l/min
 flow path configuration: P → B, A → T
 material: aluminium
 surface treatment: -
 plate weight: 0,1 kg
 fixing screws: 4 SHC M5x16 A8.8 zinc-plated
 seals: 2 OR type 2068 (17.17x1.78) (90 Shore for NBR)



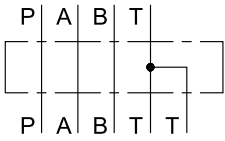
name: PE3A-AB/10N (NBR seals) **code: 1950381**

name: PE3A-AB/10V (FPM seals) **code: 1950385**

ISO interface: ISO 4401-03
 nominal flow rate (Δp 5 bar): 50 l/min
 flow path configuration: A ↔ B
 material: aluminium
 surface treatment: -
 plate weight: 0,1 kg
 fixing screws: 4 SHC M5x16 A8.8 zinc-plated
 seals: 1 OR type 2081 (20.35x1.78) (90 Shore for NBR)



3 - INTERMEDIATE ADAPTOR PLATE

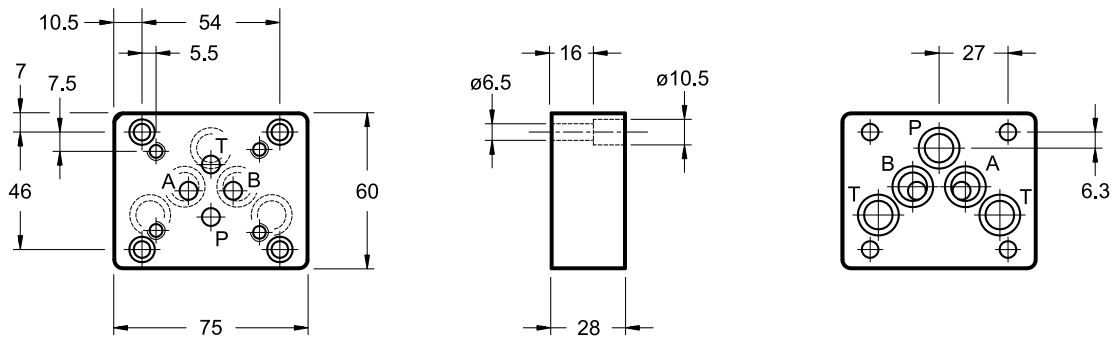


name: PC-D4/MD1-M **code:** 1950222

name: PC-D4/MD1-M/V **code:** 1950226

ISO interface: ISO 4401-05 to ISO 4401-03
 flow path configuration: through plate
 material: cast iron
 surface treatment: phosphating black
 plate weight: 0,86 kg
 fixing screws: 4 SHC M6x25 A8.8 zinc-plated
 seals: 5 OR type 2050 (12.42x1.78) (90 Shore for NBR)

dimensions in mm



DUPLOMATIC
MOTION SOLUTIONS
*a member of **DAIKIN** group*

DUPLOMATIC MS Spa

via Mario Re Depaolini, 24 | 20015 Parabiago (MI) | Italy

T +39 0331 895111 | E vendite.ita@duplomatic.com | sales.exp@duplomatic.com
duplomaticmotionsolutions.com