

PE

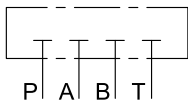
PLAQUES ISO 4401-03 ET ISO 4401-05

p max 350 bar

Les vis de fixation et les joints du plan de montage sont inclus dans la fourniture.

1 - PLAQUES AVEUGLES

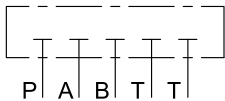
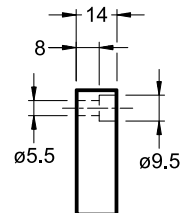
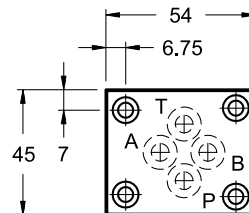
dimensions en mm



description: PE3A-S1/10N (joints en NBR)
code: 1950351

description: PE3A-S1/10V (joints en FPM)
code: 1950355

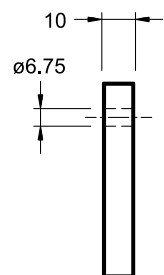
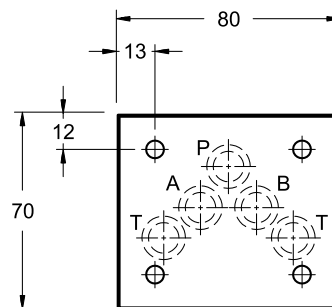
interface ISO:	ISO 4401-03
raccordement des conduites:	tous fermés
matériau:	aluminium
traitement de surface:	-
poids:	0,1 kg
vis de fixation:	4 vis CHc M5x16 A8.8 zinguées
joints:	4 OR 2037 (9.25x1.78) (90 Shore pour NBR)



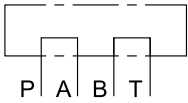
description: PE/D4-M (joints en NBR)
code: 1950042

description: PE/D4-M/V (joints en FPM)
code: 1950046

interface ISO:	ISO 4401-05
raccordement des conduites:	tous fermés
matériau:	acier
traitement de surface:	phosphatation noire
poids:	0,43 kg
vis de fixation:	4 vis CHc M6x20 A8.8 zinguées
joints:	5 OR 2050 (12.42x1.78) (90 Shore pour NBR)



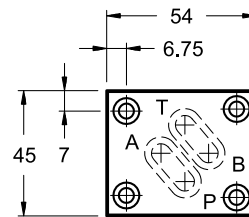
2 - PLAQUES DE RACCORDEMENT



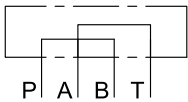
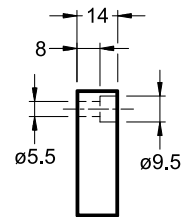
description: PE3A-TA/10N (joints en NBR)
code: 1950371

description: PE3A-TA/10V (joints en FPM)
code: 1950375

interface ISO: ISO 4401-03
 débit nominal (Δp 5 bar): 50 l/min
 raccordement des conduites: P → A, B → T
 matériau: aluminium
 Traitement de surface: -
 poids: 0,1 kg
 vis de fixation: 4 vis CHc M5x16 A8.8 zinguées
 joints: 2 OR 2068 (17.17x1.78) (90 Shore pour NBR)



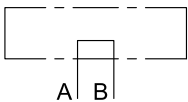
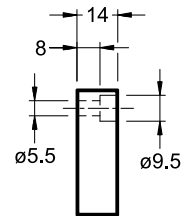
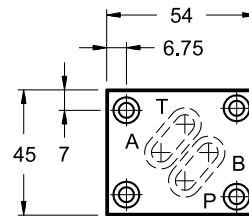
dimensions en mm



description: PE3A-TB/10N (joints en NBR)
code: 1950361

description: PE3A-TB/10V (joints en FPM)
code: 1950365

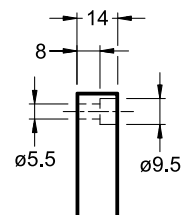
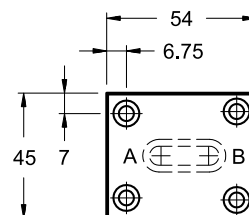
interface ISO: ISO 4401-03
 débit nominal (Δp 5 bar): 50 l/min
 raccordement des conduites: P → B, A → T
 matériau: aluminium
 traitement de surface: -
 poids: 0,1 kg
 vis de fixation: 4 vis CHc M5x16 A8.8 zinguées
 joints: 2 OR 2068 (17.17x1.78) (90 Shore pour NBR)



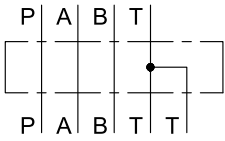
description: PE3A-AB/10N (joints en NBR)
code: 1950381

description: PE3A-AB/10V (joints en FPM)
code: 1950385

interface ISO: ISO 4401-03
 débit nominal (Δp 5 bar): 50 l/min
 raccordement des conduites: A ↔ B
 matériau: aluminium
 traitement de surface: -
 poids: 0,1 kg
 vis de fixation: 4 vis CHc M5x16 A8.8 zinguées
 joints: 1 OR 2081 (20.35x1.78) (90 Shore pour NBR)



3 - PLAQUE D'ADAPTATION INTERMÉDIAIRE

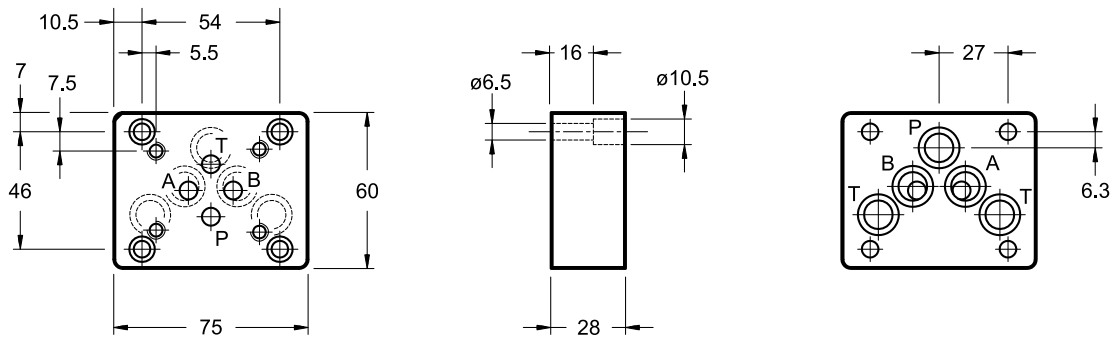


description: PC-D4/MD1-M
code: 1950222

description: PC-D4/MD1-M/V
code: 1950226

interface ISO: de ISO 4401-05 à ISO 4401-03
 raccordement des conduites: traversants
 matériau: fonte
 traitement de surface: phosphatation noire
 poids: 0,86 kg
 vis de fixation: 4 vis CHc M6x25 A8.8 zinguées
 joints: 5 OR 2050 (12.42x1.78) (90 Shore pour NBR)

dimensions en mm



DUPLOMATIC
MOTION SOLUTIONS
*a member of **DAIKIN** group*

DUPLOMATIC MS Spa

via Mario Re Depaolini, 24 | 20015 Parabiago (MI) | Italy

T +39 0331 895111 | E vendite.ita@duplomatic.com | sales.exp@duplomatic.com
duplomaticmotionsolutions.com